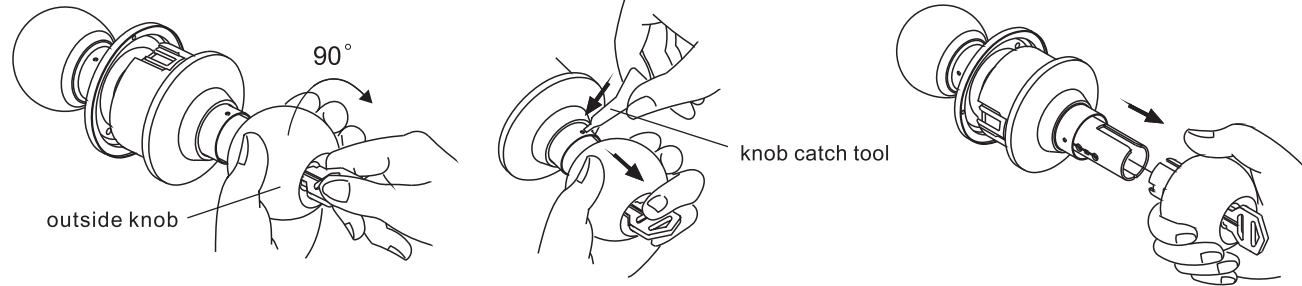


INSTRUCTION FOR REPLACEMENT OF STOREROOM FUNCTION CYLINDER ASSEMBLY

Outside Knob Disassembly:

Insert the key, turn the key to 90° .

Hold the key to retain its position; in the mean time, using the Knob Catch tool to depress Knob Catch for release the outside knob.



Outside Knob Assembly:

Align slot of knob shank and rollback then push outside knob all the way in until knob is retained by knob catch firmly. Rotate knob to check if lock functions properly.

