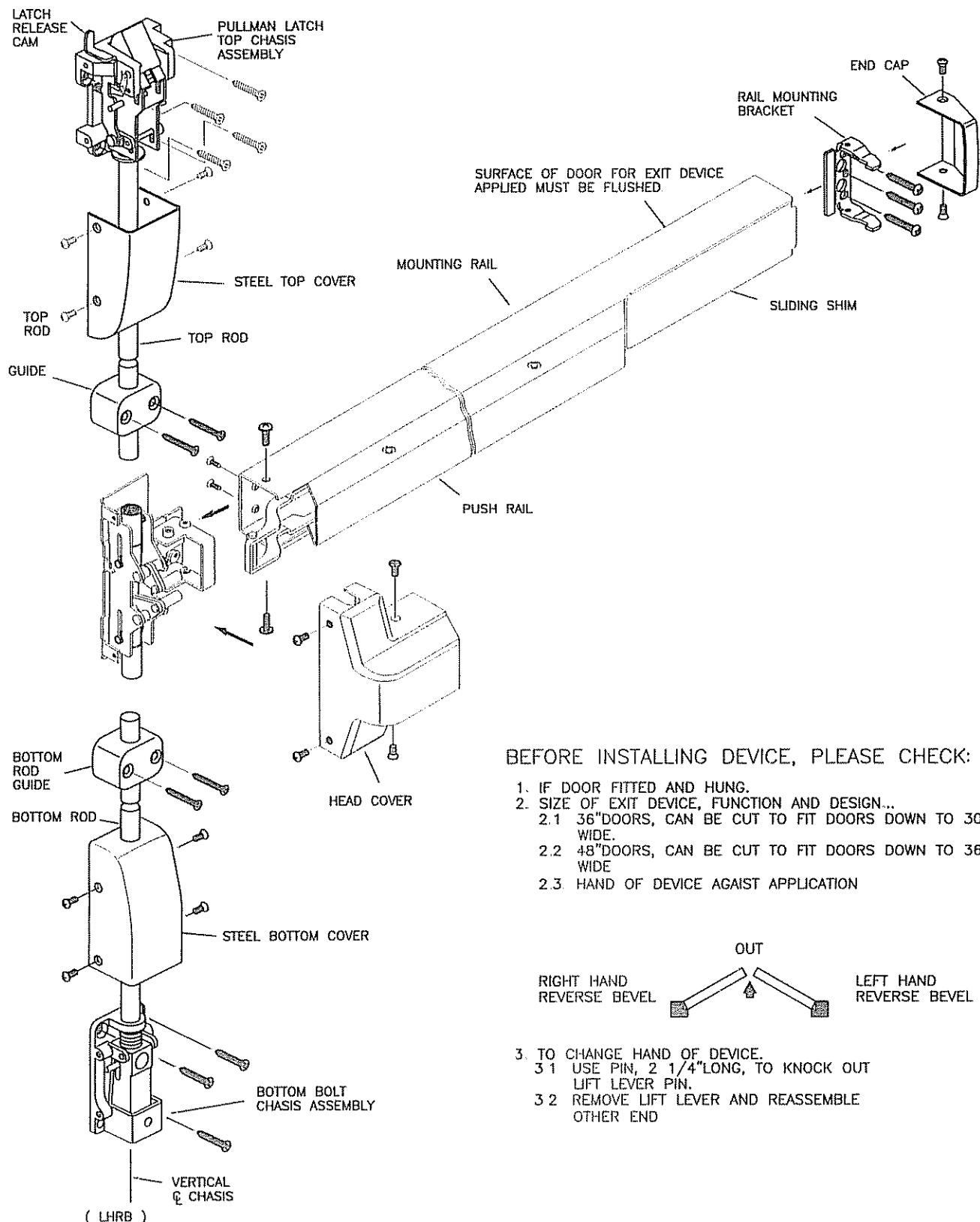
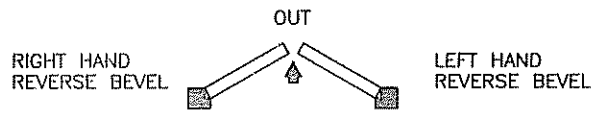


# INSTALLATION INSTRUCTION FOR 3 HOURS FIRE RATING SF-SVRTBARF SERIES SURFACE VERTICAL ROD DEVICE.



## BEFORE INSTALLING DEVICE, PLEASE CHECK:

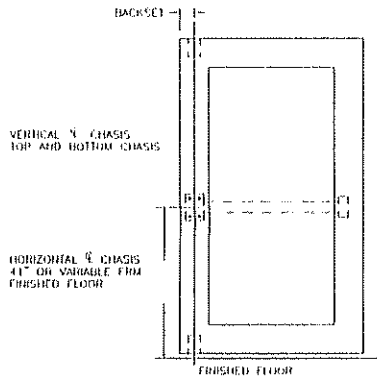
1. IF DOOR FITTED AND HUNG.
2. SIZE OF EXIT DEVICE, FUNCTION AND DESIGN...
  - 2.1 36" DOORS, CAN BE CUT TO FIT DOORS DOWN TO 30" WIDE.
  - 2.2 48" DOORS, CAN BE CUT TO FIT DOORS DOWN TO 36" WIDE
  - 2.3 HAND OF DEVICE AGAIST APPLICATION



3. TO CHANGE HAND OF DEVICE.
  - 3.1 USE PIN, 2 1/4" LONG, TO KNOCK OUT LIFT LEVER PIN.
  - 3.2 REMOVE LIFT LEVER AND REASSEMBLE OTHER END

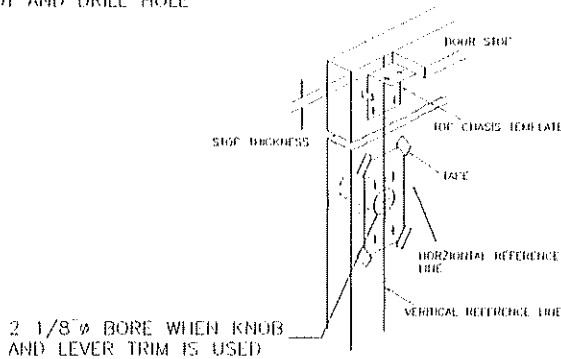
## 1. MARK VERTICAL AND HORIZONTAL REFERENCE LINE ON DOOR.

DETERMINE BACKSET TO LOCATE VERTICAL REFERENCE LINE  
 1 IF LOCK STILE IS 4 1/2" WIDE OR WIDER  
 BACKSET IS 2 3/4"  
 2 IF LOCK STILE IS LESS THAN 4 1/2" WIDE, BACKSET  
 IS HALF OF THE EXPOSED WIDTH OF LOCK STILE

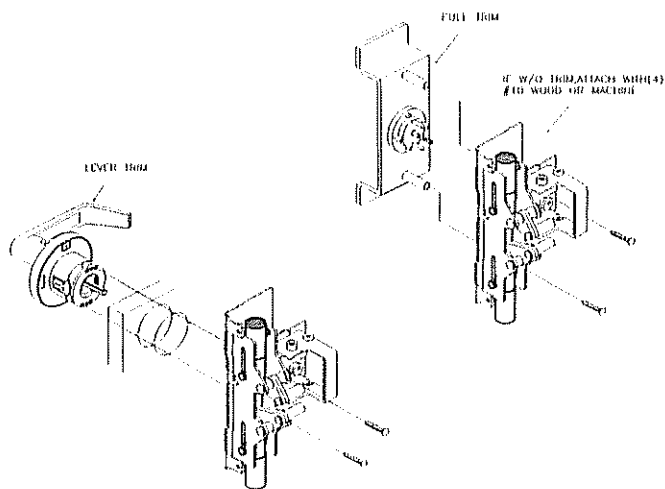


## 2. PREPARE DOOR

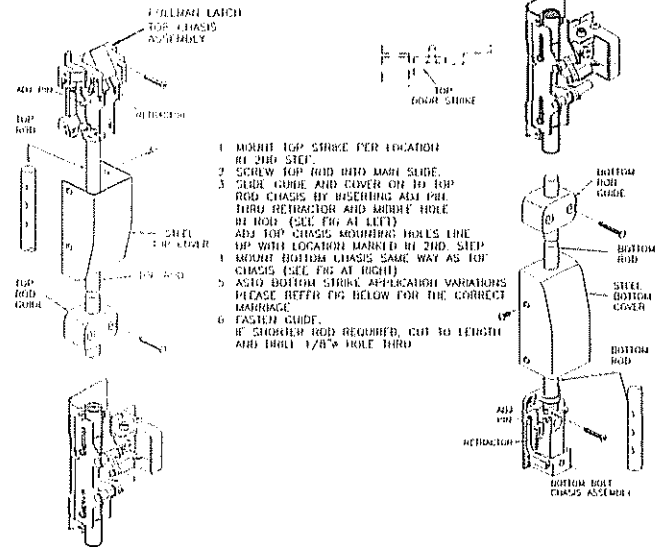
TAPE TEMPLATE ON INSIDE OF  
 DOOR ALONG REFERENCE LINE  
 SPOT AND DRILL HOLE



## 3. APPLY TRIM+CHASSIS

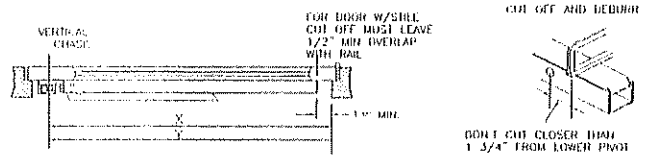


## 4. ATTACH TOP AND BOTTOM CHASSIS

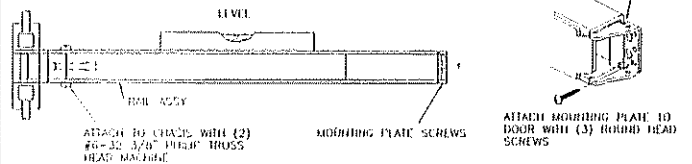


## 5. APPLY RAIL ASSEMBLY

1. CHECK THE SIZE OF DEVICE. IF CUTTING TO LENGTH IS REQUIRED.
2. DETERMINE CUT OFF LENGTH 'X' BY SUBTRACTING 1 3/4" FROM 'Y' MARK CUT OFF POINT ON MOUNTING RAIL.

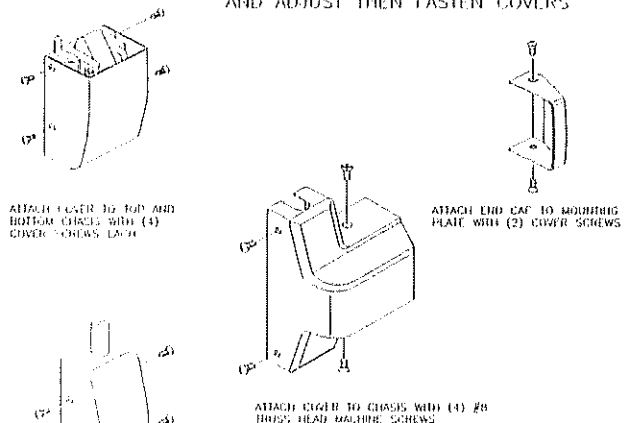


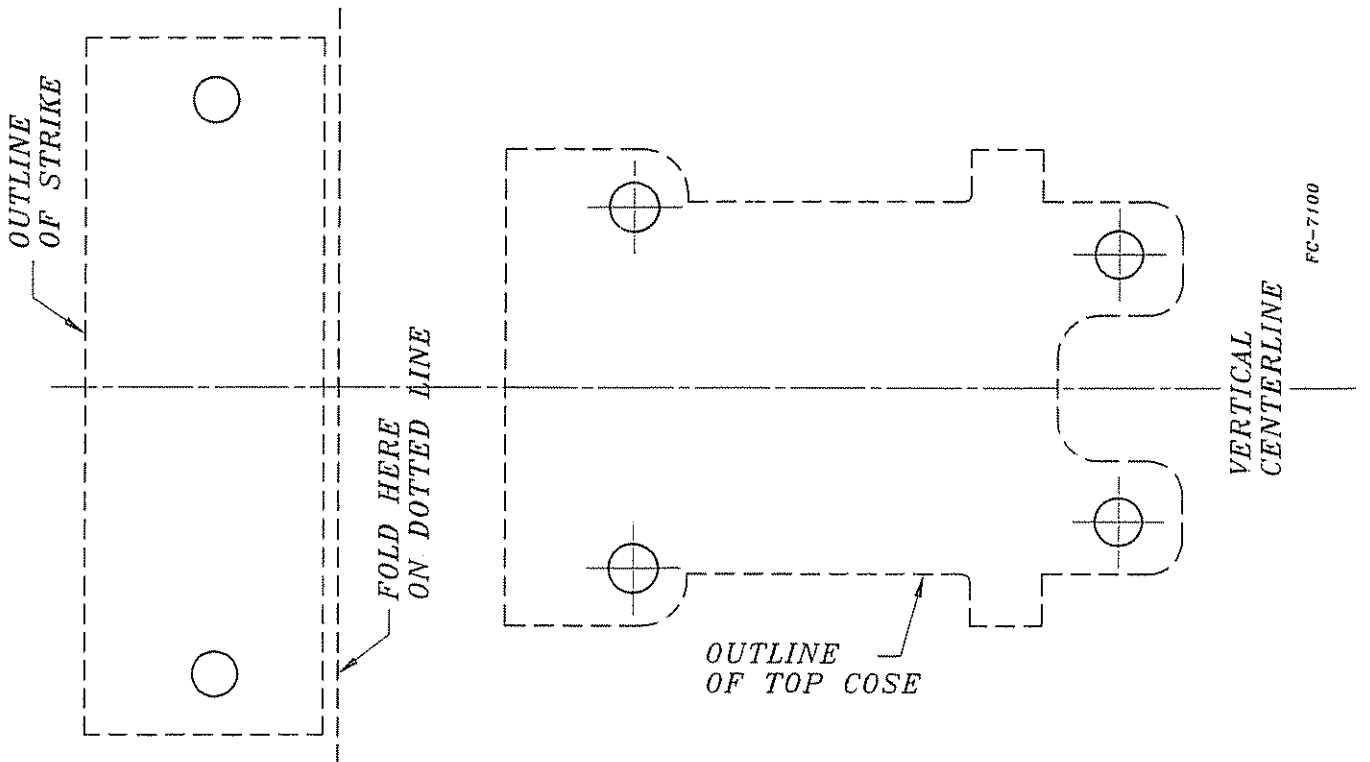
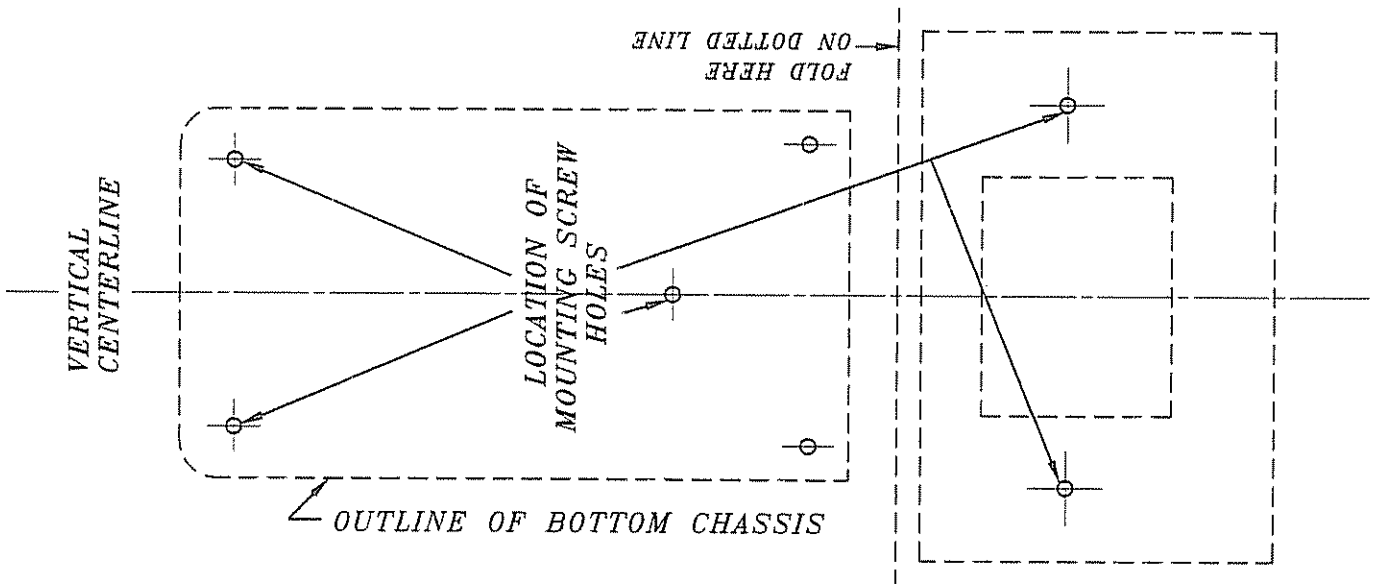
3. DEPRESS ARM INTO RAIL OPENING AND SLIDE RAIL ONTO CHASSIS LEVEL RAIL AND FASTEN CHASSIS AND MOUNTING PLATE



## 6. APPLY COVER

CHECK FINAL OPERATION OF DEVICE  
 AND ADJUST THEN FASTEN COVERS







# TEMPLATE

## FOR SVRTBAR SERIES VERT ROD EXIT DEVICE USING LEVER HANDLE TRIM

